

NORTH WHATCOM FIRE & RESCUE

Statistics Report 2022



"Semper Paratus"

TABLE OF CONTENTS

ADMINISTRATION	3
ROSTER OF MEMBERS	4
PERSONNEL	5
EMERGENCY RESPONSE	6
RESPONSE TIMES	13



ADMINISTRATION

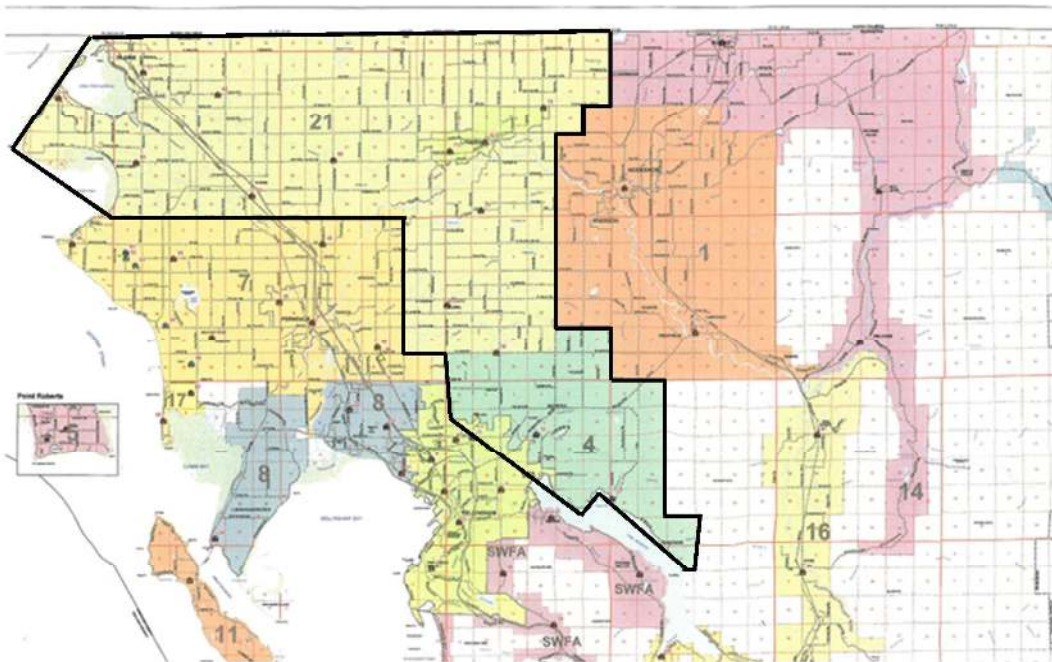
Department Overview

North Whatcom Fire and Rescue was formed December 7, 2006, from a vote to merge Whatcom County Fire Protection District #3 and Whatcom County Fire Protection District #13. In January 2007 the Fire District officially changed their name to Whatcom County Fire Protection District #21 and operates as North Whatcom Fire & Rescue.

North Whatcom Fire and Rescue formed a functional consolidation with Whatcom County Fire Protection District #4 on July 1, 2011.

District Statistics

- Service area including District 4 is one-hundred eighty-two square miles.
- Varied land use that includes forestry, rural and rural agricultural, suburban, urban and some commercial and light industrial.
- The Fire District operates nine fire stations (4 career) strategically located throughout the district.
- The City of Blaine includes two marinas, two border crossing stations, and Interstate 5 running parallel to and acting as a feeder into the city.
- The Fire District operates thirty pieces of apparatus including fire engines, tenders, two ladder trucks, brush trucks, ambulances and some specialized apparatus.
- The Fire District is classified as a “combination” fire district incorporating both paid and volunteer “on-call” personnel.
- The Fire District has forty-six full paid firefighters, two volunteers, twelve tender support, two rehab volunteers and ten support staff members.
- Fire District operations include fire response, emergency medical services including basic life support (BLS) transport, hazardous materials response at the operations level, some limited rescue, and fire prevention and public education activities.



Whatcom County Fire Districts

2022 ROSTER OF MEMBERS

Fire Commissioners

District 21

Bruce Ansell, Chair
John Crawford, Vice-Chair
**Rich Bosman (*retired*)
Scott Fischer
Kimberly McMurray
Matthew Rigberg

District 4

Mark Lann, Chair
Steve Cooley, Vice-Chair
Tim Johnson

Chief Officers

Jason Van der Veen, District Fire Chief
Jon Ahrenholz, Division Chief of Operations (*Nov*)
Shaun Ward, Division Chief of Special Services

Support Staff

Benita Williams, Business Manager
Jennie Sand, Administrative Assistant
Kelly Freeman, Human Resources
Elliot Courage, Mechanic

Training Captain

Mike Finley

Captains

Jon Ahrenholz
Mike Schmidt
Adam Smith
Burr McPhail

Lieutenants

Kevin Biery
Scott Brown (*Feb*)
Tony Esser
Troy Freeman
Chris Hollander (*Feb*)
Danny Jensen
Kris Jorgensen
Jeff Hofstad
Mike Nelson
D.J. Riehl
*Blake Scott

Deputy Fire Marshal

Joel Nielsen

Career Firefighters

Russ Briskin
Liz Bronder
Kaleb Bruch
Tyler Budwey
Kenneth Cunningham
Jason Donnelly
John Geleynse
*David Hancock
Philip Jackson
Keagan Kingslien
*Chris Lubenow
Evan Maack
Seth Meredith
Alden Roberts
Chuck Shipp
Kat Stewart
Haley Urling-Ehinger
Mark Wohlrab

Cody Bowen
Tanner Brotherton
*Darren Bruya
*David Comp
Gary DeJager
Aaron Ebner
Alex Georgulas
John Hollstein
*Dar Kazemi
Steven Latham
Mike Lyshol
Patricia McDermott
Rob Mulrooney
Wayne Sanders
*Noah Silverman
Tye Thompson
Delanie Warne

Volunteer Firefighters / Tender Support

Shawn Atwood
Brian Carlson
Jessica King
Branden Millsap
Mike Peetoom
Lane Renskers
Dale Rutgers

Jeff Bowles
Thomas Erickson
Robert King
Mel Mulligan
*Chet Renskers
Sabrina Renskers
Scott Wood

Rehab Volunteers

Kim Gates
Melissa Van Cleve



- * *resigned in 2022*
- ** *retired in 2022*

PERSONNEL

General Information

North Whatcom Fire and Rescue has personnel in the following areas:

- 46 full-paid firefighters
- 15 volunteers, tender support, rehab
- 10 support staff

Promotions

Firefighter Scott Brown and Chris Hollander were promoted to shift lieutenant in February 2022.

Lieutenant Burr McPhail was promoted to shift captain in October 2021. He was officially pinned in February 2022.

Retirement

Commissioner Rich Bosman retired on July 1, 2022 after serving on the District 3 and NWFR Board for 20+ years. The Board appointed Matthew Rigberg to serve out Bosman's term.

Volunteer Loss

Longtime volunteer Paul VanDyken passed in away in April after a long illness.



New Members

Welcome new members of North Whatcom Fire and Rescue

Career Firefighters

(left to right)

Tyler Budwey
Keagan Kingslien
Tanner Brotherton
Liz Bronder
Alex Georgulas

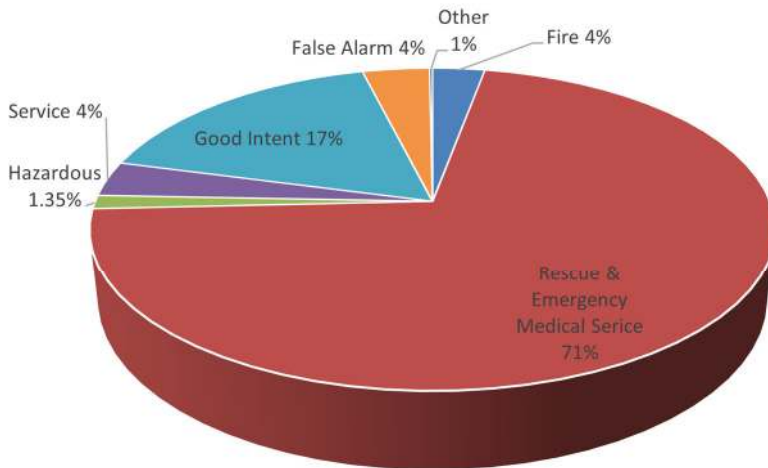


Fire Commissioner

Matthew Rigberg



Responses by Type 2022



Hazardous Condition

Spills and leaks, chemical releases, electrical, building collapse, aircraft standby, bomb removal

Good Intent Call

Dispatch cancelled en route, wrong location, controlled burn, vicinity alarm

False Alarm

Malicious, mischievous alarm, bomb scare, system malfunction

Special Incident Type

Citizen complaints, severe weather

Service Call

Person in distress, water problem, smoke odor, animal problem, public assist, unauthorized burning, standby

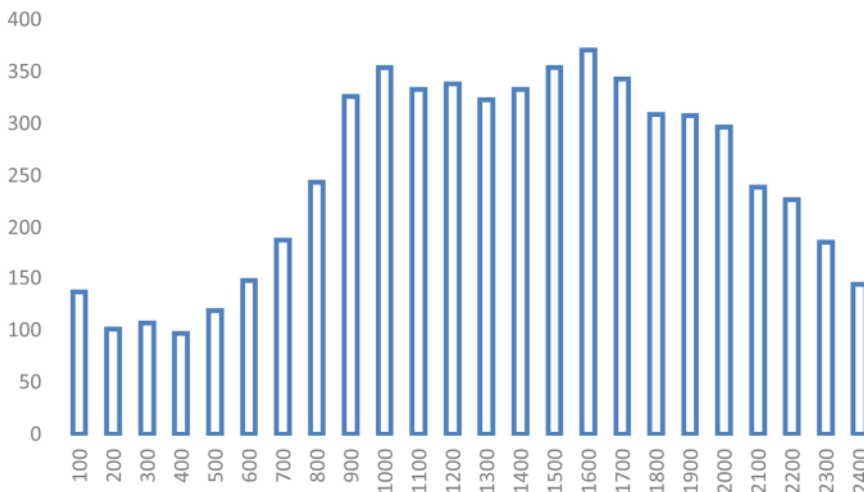
Fire

Building, mobile property, vehicle, natural vegetation, outside rubbish or equipment

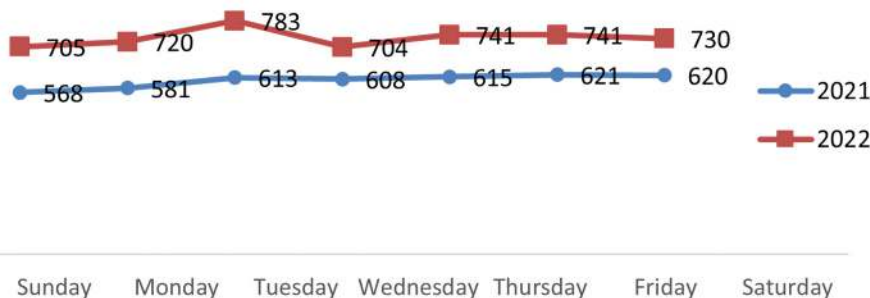
Rescue & Emergency Service

Medical assist, EMS, MVA's, water rescue, electrical, extrication

EMS Calls by Time of Day



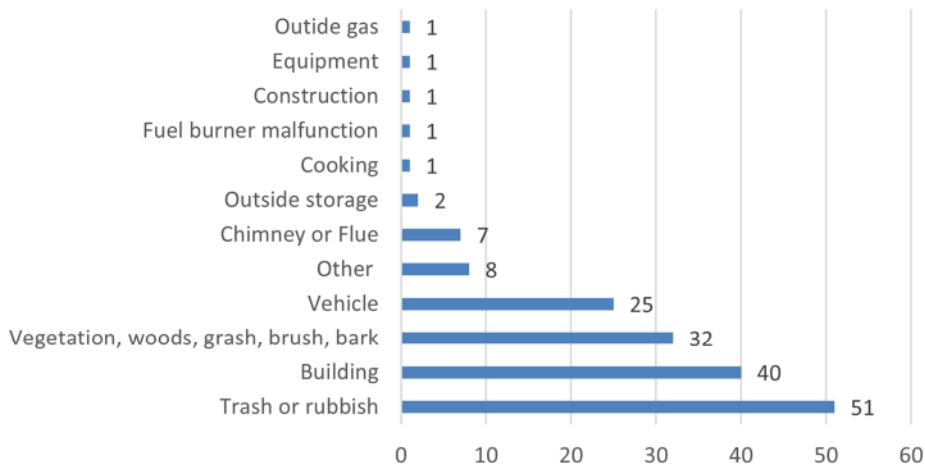
EMS Calls by Day of Week



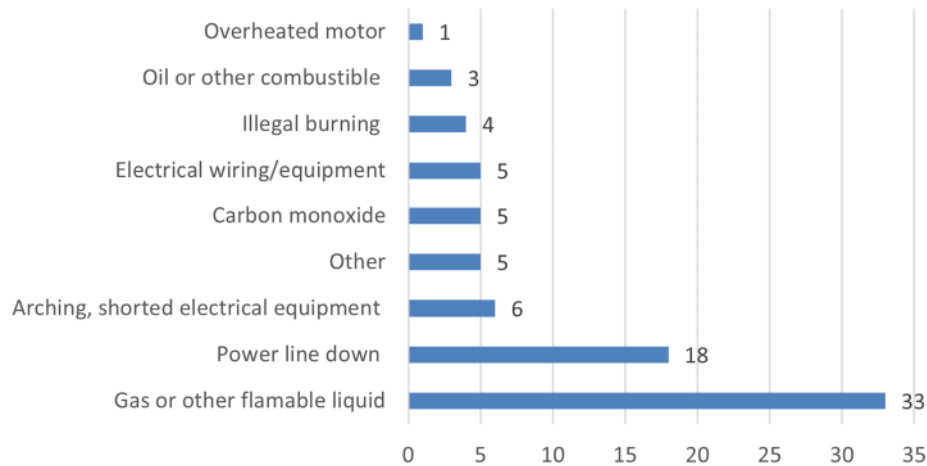
2022 Total
Calls
5,926

Incident Category other than EMS

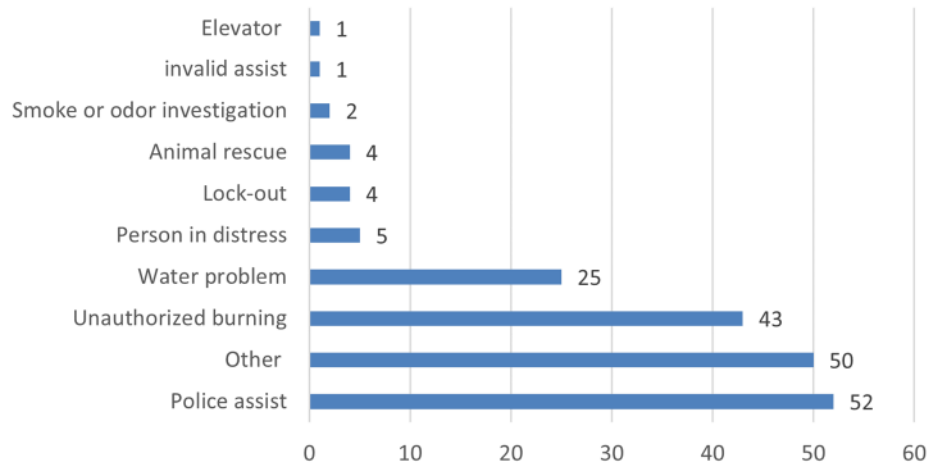
Fires



Hazardous



Service Call



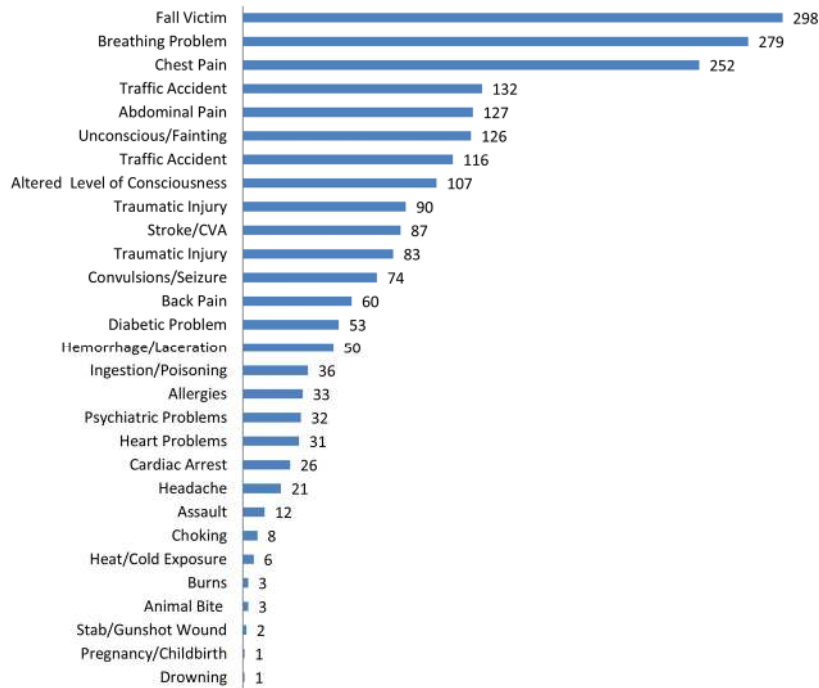
False Alarms — 222



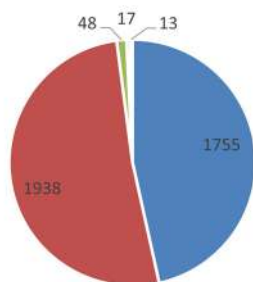
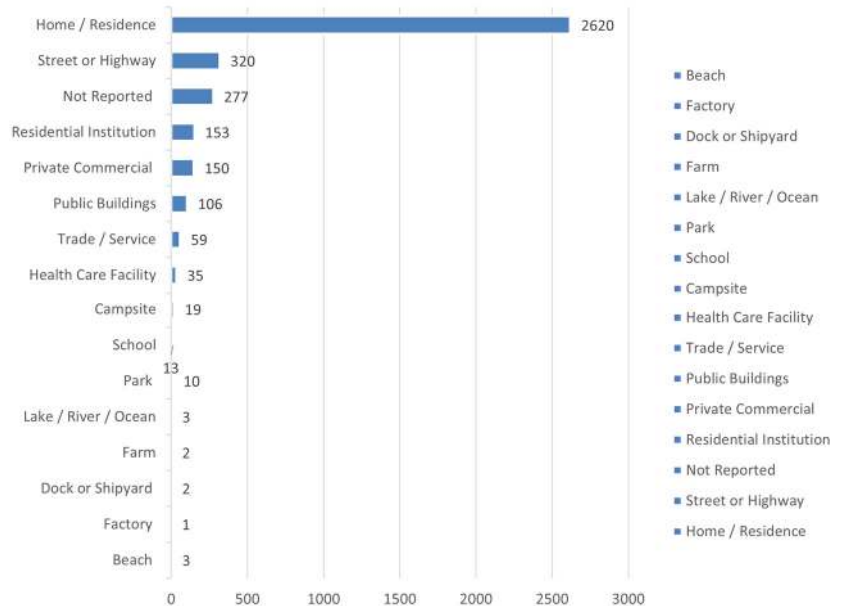
2022
Fire Loss
\$2,152,151
(property and content)



Calls by Emergency Medical Response



Location Type



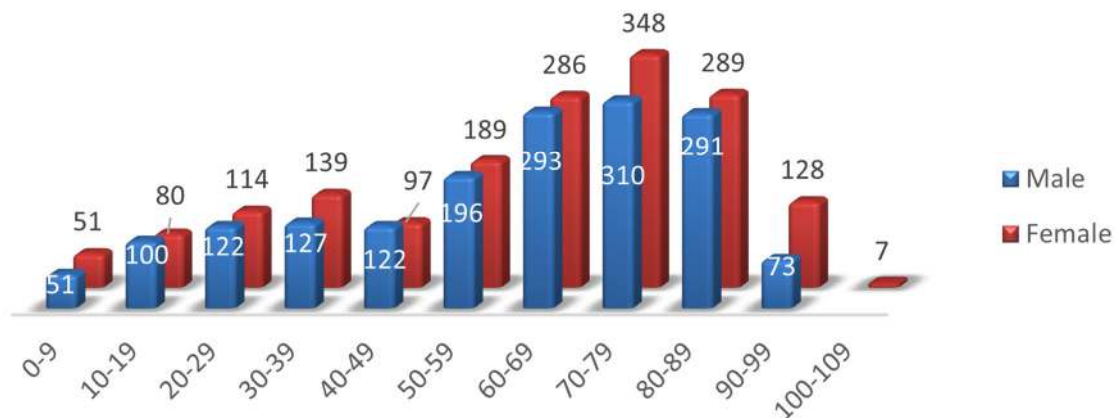
Calls by Response Mode to Scene



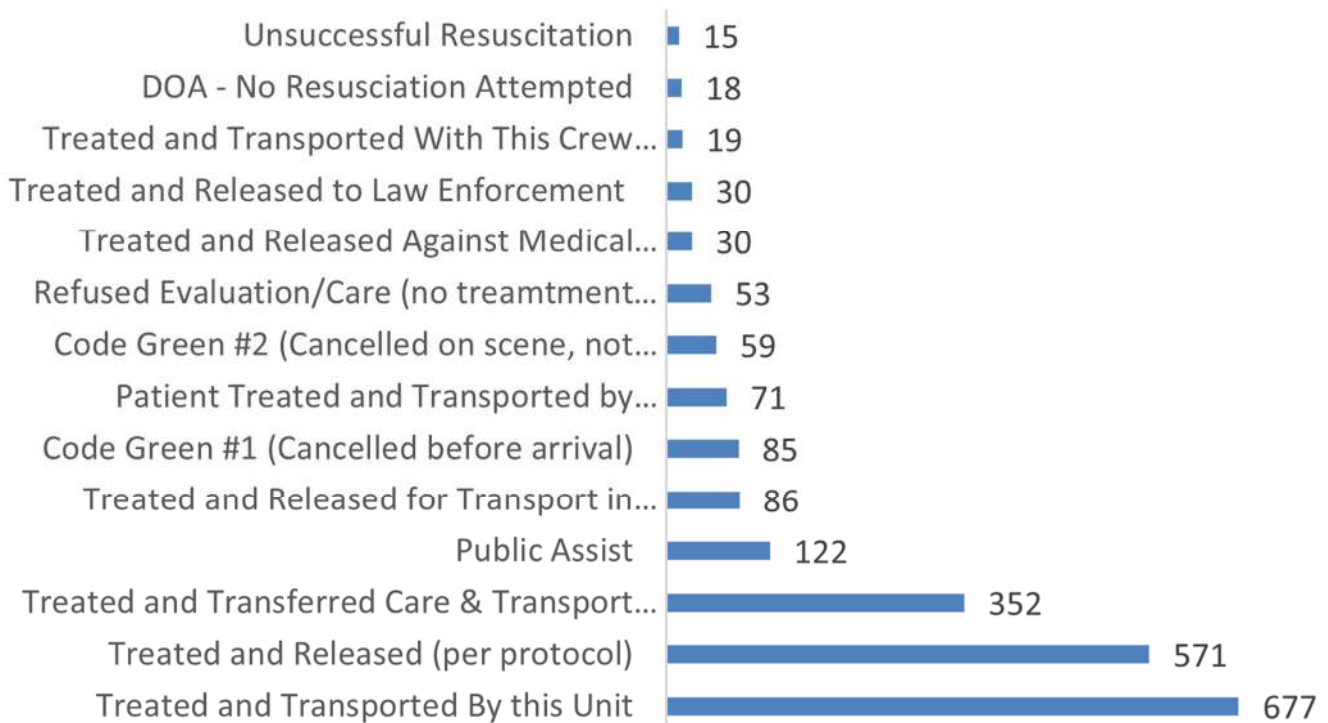
Response by Gender and Age



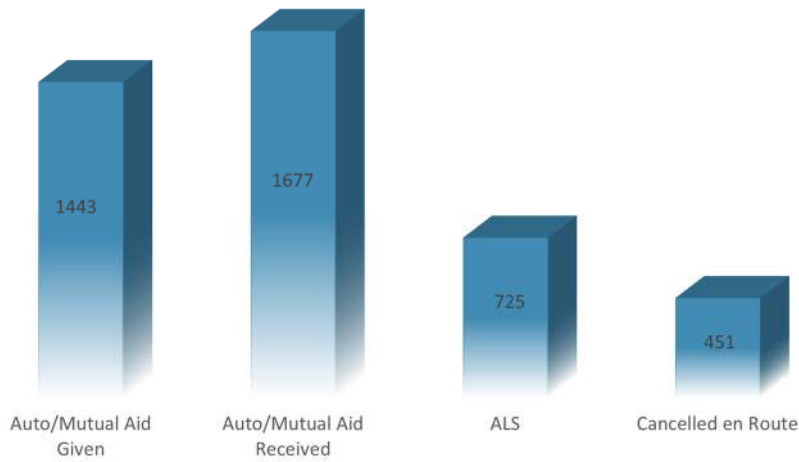
Gender not specified—196



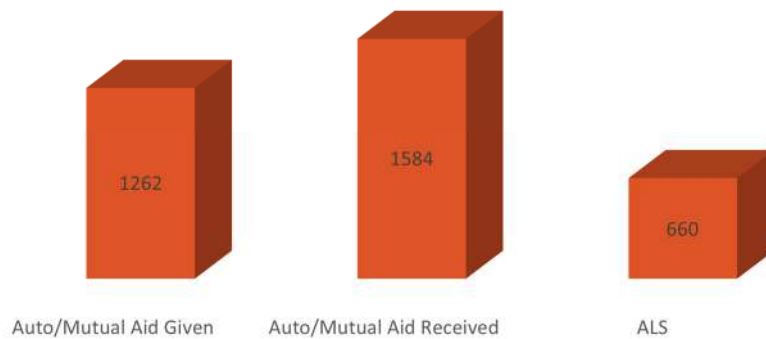
Patient Disposition



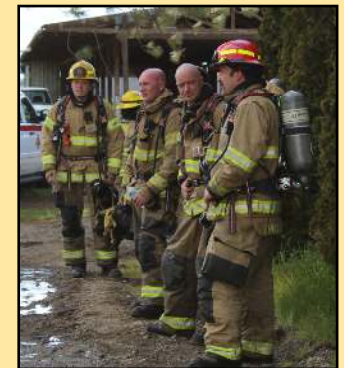
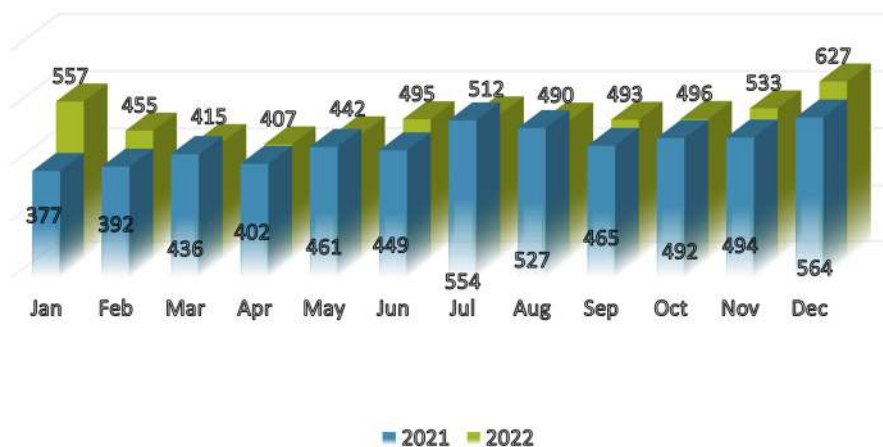
Auto, Mutual Aid and ALS 2022



Auto, Mutual Aid and ALS 2021

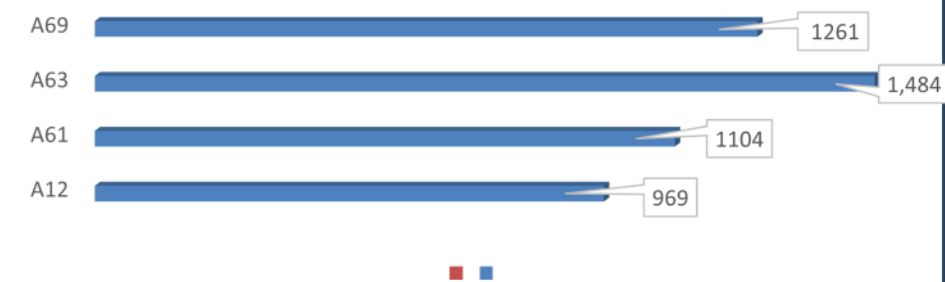


Monthly Incident Responses



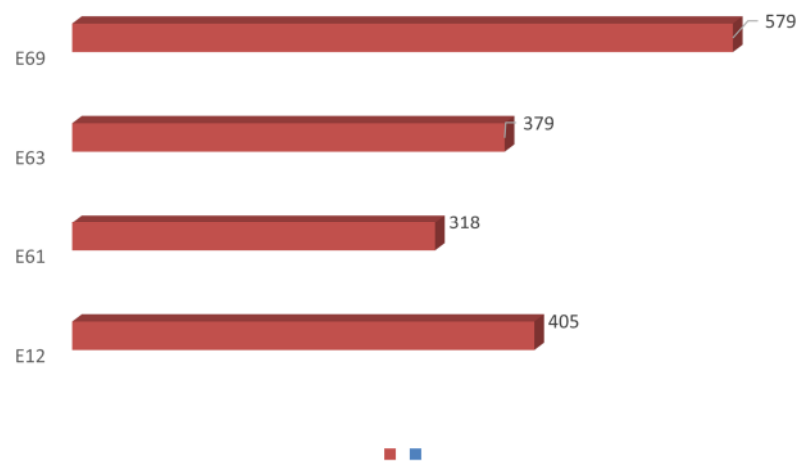
Calls by Apparatus Response

BLS Aid Unit / Ambulance Response *(basic life support vehicle equipped for taking sick or injured people to the hospital)*



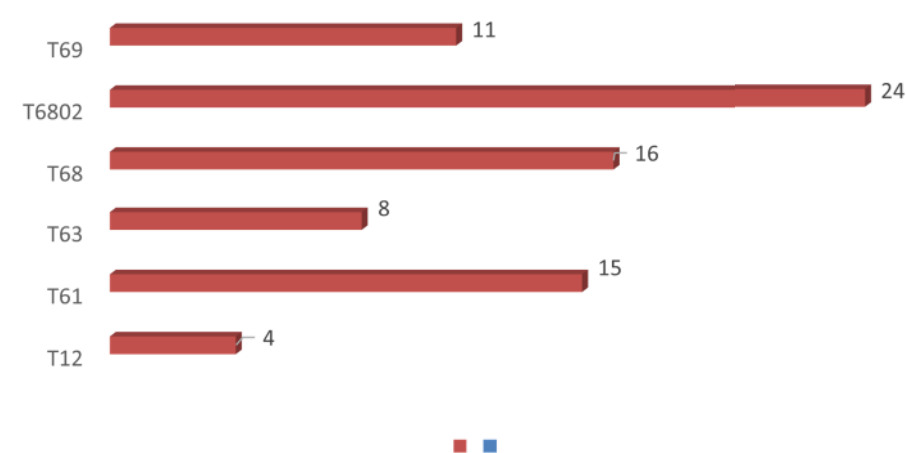
Aid / Ambulance

Engine Response *(large motor vehicle that carry firefighters and equipment and support extinguishing operations to a fire)*



Engine

Tender Response *(large motor vehicle that carry water to support fire engines and firefighters where hydrants are not available)*



Tender

Response Times

NWFR continues to focus on reducing incident response times. Faster response times mean decreased damage to property and better outcomes in life-threatening medical emergencies.

Even with crews in quarters there are times when we are challenged because of long distance travel throughout the one hundred eighty-two square miles the district protects.

NWFR has entered into automatic aid agreements to improve response times across the county. In 2013, the district entered into an automatic aid agreement to coincide with their mutual aid agreement with the City of Lynden Fire Department to improve response times to the district's area north of the City of Lynden. NWFR has also entered into an inter local agreement with the City of Bellingham, an auto aid agreement with the Ferndale Fire Department, as well as a county wide mutual aid agreement.

The single biggest obstacle to improving response times to the standard adopted by the Board of Fire Commissioners is staffing limitations.

Urban

Population >1000 per square mile

Eight minutes eighty percent of the time of the arrival of the first due fire engine company/ ambulance.

Suburban

Population of 500-1000 per square mile

Ten minutes eighty percent of the time of the arrival of the first due fire engine company/ ambulance.

Rural

population < 500 per square mile

Twelve minutes eighty percent of the time of the arrival of the first due fire engine company/ ambulance

**Overall Average Response
Time**

9 minutes 47 seconds





NORTH WHATCOM FIRE & RESCUE

1507 E. Badger Rd., PO Box 286, Lynden WA 98264

360-318-9933 www.nwfrs.net